

THE MAGAZINE OF THE KENTUCKY HUMANE SOCIETY

Fall 2021

Paw



Street Journal



Pets Including Pie Need You

McNeely Beats the Odds

Have Your Gift Matched

Holiday Gift Ideas

Kentucky 
Humane Society™
Lifelong Friends
www.kyhumane.org

Letter from Lori

Dear Friends,

It has been a very busy fall at the Kentucky Humane Society! Our staff, volunteers and foster caregivers have been helping thousands of shelter animals and owned pets over the last several months.

In September, KHS received over 60 shelter dogs and cats from Louisiana parishes impacted by Hurricane Ida. This is in addition to the thousands of cats, dogs and horses from Louisville and across Kentucky who come to KHS for help and adoption each year. We are proud to be Kentucky's largest destination shelter – meaning that when other animal shelters become overcrowded or have ill or injured animals they cannot care for, they often reach out to KHS for help. That is how we received Pie, the poor little puppy on this issue's cover.

Recently, KHS launched our Safety Net Foster Program to provide foster homes for owned dogs and cats. This program has assisted owners who have been hospitalized, deployed for military training, gone through rehabilitation or experienced temporary homelessness. We are so grateful to our caring foster caregivers who open up their homes temporarily to these animals, which helps keep pets and their families together.

Our equine department has also been quite busy! In September we were asked by local authorities to help capture and re-home over a dozen free-roaming horses in Eastern Kentucky, after a number of horses from this herd were hit by cars or suffered from other injuries. The horses are now recovering at our Willow Hope Farm in Simpsonville.

We can be here for needy animals only because of you. KHS is a private nonprofit organization, and we do not receive any government funding. We are dependent on generous supporters like you who donate to KHS or use our programs such as our Pet Resorts or behavior training classes with proceeds benefitting our mission programs.

When you support KHS, you can be assured that your thoughtfulness will make a world of difference for companion animals.

Sincerely,



Lori Kane Redmon
President & CEO



P.S. Now is a powerful time to donate to KHS. Petco Love has offered to match donations – up to a total of \$35,000 – made before November 30. Please donate to have your gift doubled to help twice as many animals.

The *Paw Street Journal* is a quarterly publication of the Kentucky Humane Society. Questions or comments may be addressed to the Public Relations Department, (502) 515-3152 or info@kyhumane.org. Circ.: 18,500

Editorial team: Dominic Jackson, Andrea Blair and Megan Decker.

Board of Directors

Beth Andrews (Chair), Jennifer Branch, Steve Codey, Tony Deye, David Easterling, Mark Grindstaff, Melissa Hicks, Bill Myers, Patrick Padgett, Darren Stein, Jena Stone, Ellen Stubbs

Brian Haara,* Rick Maynard,* Patti Swope*

* *Advisory Board*



Cover photo of Pie by
Jennifer Schoenegge,
jenniferschoenegge.com

Leadership Team

Lori Redmon, President & CEO
Britney Chaney, Chief Operating Officer
Alisa Gray, VP of Outreach
Karen Koenig, VP of Animal Welfare
Andrea Blair, PR & Marketing Director
Jeff Callaway, Facilities Director
Bob McCaughey, Director of Finance
Kat Rooks, Kentucky Initiatives Director
Robin Vincent, Shelter Operations Director
Kristin Binkowski, Planned Giving Specialist

www.kyhumane.org
(502) 366-3355





Cake & Pie 🐾

Thank You for Helping KHS Save Homeless Animals Like These

Two very ill puppies arrived at the Kentucky Humane Society after they were abandoned at another animal shelter – unwanted and alone.

These puppies – whom our staff named Cake and Pie because of how sweet they are – were fighting for their lives. They were suffering from parvovirus, a deadly disease that attacks unvaccinated dogs. Without immediate medical intervention, most puppies don't make it.

Cake and Pie were in desperate need of lifesaving care. But hidden under the pain were two sweet puppies with lots of love to give.

Thanks to your support, KHS can take in animals like Cake and her sister, Pie, and give them lifesaving medical care, safe haven and time to heal. Because of you, these two little ones were saved. Once they gained a little strength, their personalities blossomed. Both started barking and wagging their tails at mealtimes. It wasn't long before they were ready for a loving foster home and their forever families.

But there are still so many animals in Louisville and across Kentucky who are suffering from illness, abuse or abandonment. This has been a difficult year. Ongoing economic hardship has impacted revenues, and more animals than ever before are in crisis.

KHS is Kentucky's largest pet adoption agency and spay/neuter provider. Thanks to compassionate people like you, KHS takes in and finds homes for more than 5,500 cats, dogs and horses every year, and provides critical resources to pet owners in need. KHS helps animals not only in Jefferson County, but from all corners of Kentucky – and sometimes even animals from other communities and states.

All of this is possible because of you. Your donations allow KHS to give needy animals lifesaving medical care, nutritious food, kindness – and forever homes. Your support helps us their lives. Thank you! 🐾

Have Your Gift Matched

Petco Love has offered to match – dollar for dollar – every gift KHS receives by November 30, up to a total of \$35,000! You can help bring joy and hope this holiday season to Kentucky's needy animals. Please join our "Give Hope" holiday giving campaign by returning the enclosed envelope or by giving online at kyhumane.org/donate. If you prefer to mail your gift, the address is Kentucky Humane Society, 1000 Lyndon Lane Suite B, Louisville KY 40222.

PROUDLY SUPPORTED BY



McNeely Beats the Odds 🐾

Three-year-old McNeely – named after McNeely Lake where she was found – is an adorable medium-haired tabby cat with a fluffy white chin and chest. She enjoys playing with toys and snuggling with her person.

But when she arrived at KHS in July, McNeely's prognosis was dire. This poor kitty had been attacked by another animal and had several bite wounds all over her stomach. These wounds had become so infected that maggots were crawling in her wounds.

The KHS veterinary team cleaned her injuries and began her on antibiotics to help her heal. A month went by, and despite our veterinarian trying various medications, McNeely wasn't improving. In fact, her wounds were spreading across her abdomen instead of healing.

Our veterinarian sent a culture out for testing, and it turned out that McNeely had an antibiotic-resistant infection that required a specialized drug if she were going to have any chance at getting better. We ordered the new drug, and after a week McNeely finally began to heal.

McNeely's foster mom, Laura, reports that McNeely likes to "stretch out on her side with her back against my leg and just lays there purring with her eyes closed while I give her a full body rub." 🐾



Friends Reunited 🐾

Happy adoption day to Hilda, and happy reunion to Saoirse (formerly known as Sandy at KHS), as she reunites with an old herdmate.

Both mares were part of a large intervention in Wayne County KY, where KHS worked with local law enforcement, state officials and two other organizations to remove and provide care to a herd of around 40 horses when multiple members of their herd were found dead. Several that perished before intervention were malnourished mares who didn't have the energy to give birth to foals that spring.

Saoirse was adopted last year with heartwarming success, and when her adopter was looking for another mustang, she came back to KHS to give Saoirse's remaining herdmate a home.

This photo was when they first saw each other again. We couldn't be happier for quirky drafty-looking gal Hilda who tries so hard to find the right answers but sometimes struggles with confidence and focus. Saoirse also had a few struggles to overcome when she first got home, but is she is now a safe, reliable mount. We cannot wait to follow Hilda's story as she, too, blossoms with an adopter's love.

View all KHS adoptable horses and learn more about our equine program at kyhumane.org/horses or follow us at facebook.com/khsequine. 🐾



KHS Helps Hurricane-Impacted Shelters 🐾

In early September, the Kentucky Humane Society received over 60 shelter animals from Louisiana communities ravaged by Hurricane Ida. All of these pets had been in animal shelters prior to Hurricane Ida's arrival.

"By taking in these unwanted shelter animals, KHS helped Louisiana shelters make room for more owner-surrendered animals as well as lost pets so they could be reunited with their families," said Karen Koenig, Vice President of Animal Welfare.

Approximately 30 dogs and 30 cats stayed at KHS' Sam Swope Pet Retreat in Jeffersonton until they were medically assessed and ready for adoption. KHS uses the Pet Retreat as an emergency staging center for animals coming from large-scale rescues as well as for dogs needing behavioral rehabilitation before adoption.

We are happy to report that most of the animals had been adopted by the time this publication went to press. View all adoptable pets at kyhumane.org. 🐾



Members of the KHS foster team include Erin, Aurelia, Kelly and Dakota.

KHS Participates in National Foster Study 🐾

KHS recently launched a crisis fostering program to help keep families and their pets together in times of crisis.

"Our new Safety Net Foster Program helps pet owners who need temporary fostering for their animals, such as when owners are facing eviction, rehabilitation, hospitalization or loss of housing," said Shelby Schulz, KHS Pet Resource Manager.

KHS is one of just 18 animal shelters selected to participate in the Arizona State University/Virginia Tech Maddie's Fund Nationwide Fostering Study. KHS collected data about the Safety

Net Foster Program, which will allow the researchers to have a better understanding of the needs of the pet-owning community and contribute to innovative, evidence-based practices in animal sheltering.

Over a dozen families have enrolled in KHS' Safety Net Foster Program. If you or someone you know needs 30-90 days of temporary care for their pets, visit www.kyhumane.org/help.

Or if you would like to become a foster caregiver, visit kyhumane.org/foster to learn more and fill out a foster application. 🐾

How to Help This Holiday Season 🐾

Want to help needy cats, dogs and horses this holiday season? Join our "Give Hope" holiday campaign with your donation. You can also help KHS with various purchases.

Shop Our Pawtique

Our online Pawtique retail store has adorable KHS- and animal-themed T-shirts, hoodies, bandanas and more for your pet-loving friends and family members, kyhumane.org/pawtique.

Choose Amazon Smile

If you shop Amazon, use smile.amazon.com to have Amazon donate .5% of all your eligible purchases to the charity of your choice. Amazon Smile has the same products, prices and service, at no cost to you. Already this year, KHS has received over \$3,300 through this program.

Kroger Rewards

Show your support for homeless animals by using your Kroger Plus card. Register your card at krogercommunityrewards.com, choose KHS as your charity, and with each purchase Kroger will donate a percentage to help shelter pets. Purchases add up! Khs has received over \$23,000 this year thanks to shoppers who choose us.



Dedication Paver

Honor or memorialize a two- or four-legged friend with an engraved brick at KHS' Sam Swope Pet Treatment & Lifesaving Center; 4"x8" pavers are \$100 and 8"x8" pavers are \$250. Visit kyhumane.org/honor-gifts.

Pawlday Raffle & Auction

Get ready to get your shopping on our online Pawlday Auction & Raffle! The Pawlday Auction will have an Ethan Almighty plush animal courtesy of Cuddle Clones, rare bourbons, dog and cat merchandise, KHS swag, jewelry and more. The auction will open Monday, Nov. 29 and close Sunday, Dec. 5, at 8pm EST.

And for just \$10 a chance, you could win a \$1,000 Pawlday Spending Spree while helping the animals! Raffles will be sold Nov. 29-Dec. 9, with the drawing at 1pm EST Friday, December 10. A big thanks to Metlife Pet Insurance for sponsoring this raffle. We will have more information on our website in late November, kyhumane.org. 🐾



Tuxes & Tails Raises "Bread" for Pets

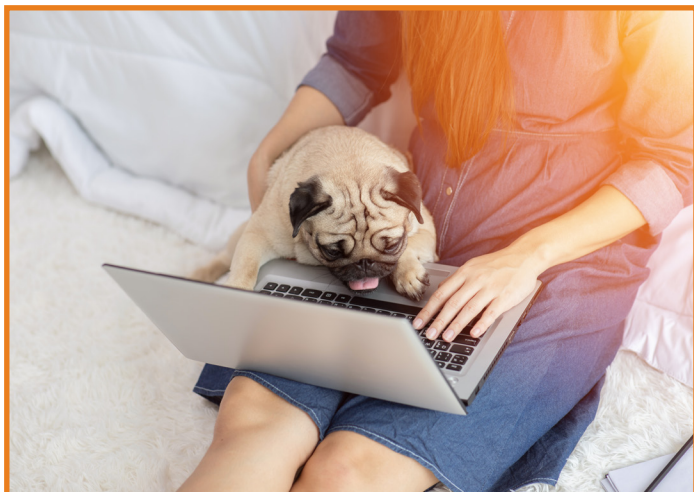
Far out! The theme to KHS' 27th annual Tuxes Tails Gala was Woofstock: because who doesn't need a little more Peace, Love and Pets? Thanks to in-person and virtual gala attendees on August 21, over \$340,000 was raised to help needy cats, dogs and horses! We want to give a special thanks to our Presenting Sponsors Mister "P" Express Inc. and Brown-Forman, our Signature Sponsor Purrfect Day Café and our Platinum Sponsor Chewy's. 🐾



KHS Calendars for Sale in November

KHS' popular Pet Calendar will be ready for distribution in November! This year's cover "ani-model" is Mulligan, KHS alumna and spokesdog for TurfMutt Foundation. You can pre-order your 2022 calendar at kyhumane.org/calendar-order. The calendar makes for a great stocking stuffer and features adorable local animals. And anyone who submitted a photo of their pet for our calendar contest will receive a free copy in the mail in November. 🐾

Create your Legal Will with FreeWill 🍀



KHS has partnered with FreeWill to make it easier than ever for you to create your legacy. Using this free online tool, you can write a legal will in 20 minutes or less. You can choose to help pets for generations to come while providing peace of mind and security for you and your loved ones.

In addition, when you include KHS in your estate plans, you can choose to enroll your animals in our Pet Guardianship Program. KHS will promise to take care of your beloved animals when you no longer can, giving you peace of mind.

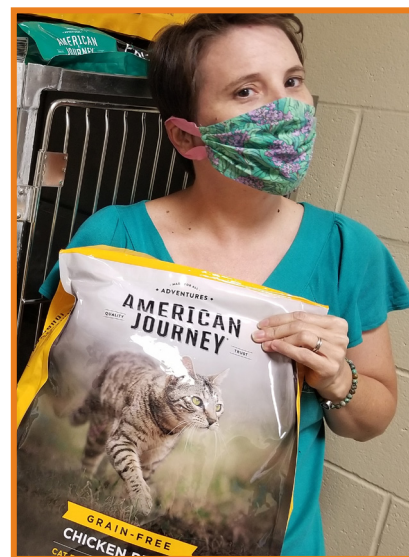
Get started on your will at freewill.com/kyhumane. For questions, contact Kristin Binkowski, Planned Giving Specialist, at 502-515-3147 or kbinkowski@kyhumane.org. 🐾

Chewy Gives Back 🍀

Our friends at Chewy are working around the clock to ensure pet food and supplies are reaching those who need it most. So far this year, Chewy has donated over \$25 million in food and supplies to thousands of animal groups across the U.S. – including KHS.

"We're proud to be a part of Chewy's Shelter and Rescue Network and a recipient of pet food and supplies from their Chewy Gives Back initiatives. Because of their generous donations, all dogs and cats at KHS are fed the high-quality nutrition of American Journey, which sets them up for a smooth transition into their forever homes," says Valerie Merrifield, Adoptions Manager.

Chewy also makes it easy for supporters to donate much-needed supplies through KHS' Chewy Wish List. Simply scan the QR code on your phone to access the wish list. 🐾



Need to Rehome Your Horse? We Can Help!

Most horses go through multiple owners over the course of their long lifespans, and often the reason for rehoming them has nothing to do with the horse and everything to do with the changing lifestyles of their families. Owners age, kids grow up and families move, which means many horses will need new homes. To help families find the best possible new homes for their horses, KHS has launched our Horses Welcome initiative, supported by a grant from the ASPCA. Learn more at kyhumane.org/equine/get-help. 🐾

Contact Us

Sam Swope Pet TLC Center

241 Steedly Drive
Louisville, KY 40214

Adoptions

Monday–Friday 11 a.m. to 5 p.m.

Saturday & Sunday 11 a.m. to 4 p.m.

Admissions by Appointment

East Campus

1000 Lyndon Lane, Suite B
Louisville, KY 40222

Adoptions

Monday–Friday, 10 a.m. to 6 p.m.

Saturday–Sunday, 10 a.m. to 5 p.m.



Adoptions	(502) 272-1070
Pet Help Line	(502) 509-4738
Donations	(502) 515-3143
Volunteers	(502) 515-3145
Behavior Training	(502) 253-2883
Equine Programs	(502) 272-1068

Eastpoint Pet Resort

13310 Magisterial Drive
Louisville, KY 40223
(502) 253-2221

Fern Creek Pet Resort

5225 Bardstown Road
Louisville, KY 40291
(502) 499-1910

S.N.I.P. Clinic

4918 Preston Highway
Louisville, KY 40213
(502) 636-3491



Barkley and his new poppa!



Happy trails, Hoss!

Happy Tails – Congrats to ALL Adoptees



Eriyu and her new family!



George, a senior Persian, got scooped up after being on the adoption floor for less than a day. He has two Persian kitty siblings to play with and a mom who adores him. George stole all of our hearts at KHS and we are thrilled he found a home with an experienced owner who will keep up with his grooming needs. Congratulations, George!



Sassy Finn is ready to go home!



Cowboy has been adopted by his foster family! This puppy came to KHS needing an emergency amputation after his leg was degloved from a car accident. Congratulations to Cowboy and his forever family! We are so happy for you!