

# 2024 ANNUAL REPORT



Commitment to  
Proactive Solutions &  
Lifesaving Care

# Letter from Alisa, KHS President & CEO

Dear Friends,

As we look back on 2024, we are filled with immense pride and gratitude. This year marked the successful completion of our three-year strategic plan for the Kentucky Humane Society (KHS)—a plan that focused on saving more cats, expanding proactive community programs, and strengthening our role as a leader in animal welfare. Thanks to our dedicated team, generous supporters and incredible partners, we made remarkable progress.

One of our biggest milestones in cat adoptions came through our partnership with Purrfect Day Café (PDC). On August 11, 2024, PDC adopted its 10,000th cat—making it the first cat café in the nation to reach this incredible achievement! When we started this partnership six years ago, we never imagined we would celebrate this milestone so soon. In addition, our innovative Working Cats program saw a substantial increase in adoptions, helping place cats not suitable for home adoptions in barns, breweries, and warehouses where they thrive.


We also made great strides in our Love 120 initiative, our mission to positively impact companion animals and the people who love them in all 120 Kentucky counties. Since launching in 2018, we have reached 90 counties—75% of the state. We extended our outreach beyond dogs and cats, strengthening our equine programs as well. Through equine-assisted learning, corporate training, and public events, we are ensuring that KHS is recognized as a champion for cats, dogs, and horses alike.

As an industry leader, KHS continues to collaborate with national and statewide organizations. Our team has had the privilege of sharing our expertise at conferences across the country. And in a groundbreaking

achievement, KHS became the first shelter in the U.S. to use CPMA parvo medicine—which has increased survival rates to 99% and shortened treatment time from 10–14 days to just 4–7 days.

Looking ahead, we are eager to build on this momentum. As we develop our next strategic plan, we are setting bold, ambitious goals to continue leading the way for animal welfare in Kentucky. I could not be more proud of what we have accomplished together, and I am deeply grateful for your continued support. With your help, we will make an even greater impact in the years to come, ensuring KHS remains a place of refuge, compassion, and hope for animals in need.

With gratitude,



Alisa Gray  
President & CEO



## Mission

The Kentucky Humane Society is a champion for companion animals and the people who love them. Through leadership, education and proactive solutions, we are creating more compassionate communities.

## Core Values



Always Pawsitive



Compassion Matters



Inspire Others



Ever Evolving

### Board of Directors

Tara Bristow  
*Chair*

Karen Williams  
*Chair Elect and Building Chair*

Patrick Padgett  
*Immediate Past Chair*

Toni Clem  
*Governance Chair*

Jena Stone  
*Finance Chair*

Leigh Anne Hughes  
*Secretary*

Shari Ammon

Landon Brantley

Eric Braun

Melissa Hicks

Rachel Horton

Ellen Stubbs

### Advisory Board

Brian Haara

Rick Maynard

Patti Swope

### Leadership Team

Alisa Gray  
*President & CEO*

Britney Chaney  
*Chief Operating Officer*

Karen Koenig  
*Vice President of Animal Welfare*

Emily Bewley, DVM  
*Director of Veterinary Services*

Savannah Gregorchik-Menendez  
*Development Director*

Damian Heck  
*Facilities Director*

Scott Kautzman  
*Director of Finance & IT*

Andrea Mattingly  
*PR & Marketing Director*

Lori Redmon  
*Equine Director*

Sara Rehfeld  
*Shelter Operations Director*

Kat Rooks  
*Kentucky Initiatives Director*

# Kentucky Humane Society's 2024 Impact



**1,941**  
DOGS  
ADOPTED



**3,497**  
CATS  
ADOPTED



**61**  
HORSES  
ADOPTED



**67** FOSTER  
FIRST  
ADOPTIONS



**3,120**  
Animals in Foster Homes



**583** ACTIVE FOSTER FAMILIES



**4,952**  
CARE-A-VAN  
WELLNESS  
APPOINTMENTS



**14,613**  
Spay/Neuter Surgeries  
(S.N.I.P. Clinic, CARE-a-van and Vet Services)



**75%** OF ALL KY COUNTIES IMPACTED BY LOVE 120



**6,347**

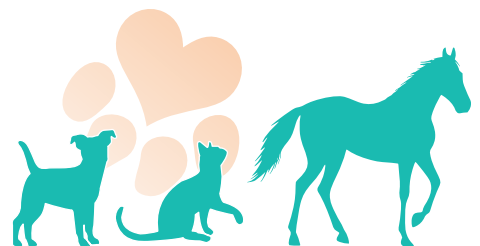
CLIENTS HELPED BY PET  
RETENTION SERVICES

**953** Vouchers  
Redeemed



**30,530**

BOARDING, GROOMING &  
DAYCARE APPOINTMENTS



**889**

ACTIVE VOLUNTEERS



**449**  
DOG  
DATES

**514**

DOGS IN PLAYGROUPS



**10,006**  
Volunteer Hours



## Advancing Lifesaving Initiatives for Cats

This year marked the successful completion of our three-year strategic plan at the Kentucky Humane Society (KHS)—a plan that intentionally prioritized our initiatives for cats. Over the past three years, KHS expanded our network of transport partners to help move at-risk cats from overcrowded shelters to our safe and loving facilities.

Part of the reason we have been able to save more cats is thanks to our partnership with Purrfect Day Café (PDC). This year, they achieved an incredible milestone in cat adoption history. On August 11, 2024, PDC adopted its 10,000th cat, becoming the first cat café in the nation to achieve this remarkable feat. Thanks to our shared mission and vision, PDC's unique approach to cat adoption has been a game-changer for our community.

In addition to our work with PDC, our Working Cat program also exceeded expectations, with a 22% increase in adoptions since 2022. This innovative program places cats in indoor/outdoor environments like barns, breweries and warehouses where they serve as natural pest controllers. Working cats would not be

appropriate for home adoptions, so by finding them alternative jobs, we have saved more lives.

We also continued with distributing vaccines and preventatives to shelters across the state to ensure their cats received the care they needed. We were especially happy to provide a \$5,000 gift to Butler County to support their new spay/neuter clinic. This clinic is already making a significant impact, helping to reduce the number of unexpected litters and, in turn, preventing more cats from entering overcrowded shelters.

Our focus on saving more cats has helped more animals find loving homes and strengthened KHS's ability to respond to community needs. We are proud of the lives we've changed and the partnerships we've built, and we are excited to continue growing this work for years to come.



## Proactive Statewide Community Programs

As part of our ongoing mission to help more animals in need, we made tremendous strides in expanding our reach and footprint, particularly through the Love 120 initiative. Launched in 2018, Love 120 aims to positively impact companion animals and the people who love them in all 120 Kentucky counties. By the end of 2024, we reached 90 counties – 75% of the state – growing our partnerships with more shelters across our state.

While aiding rural counties, we knew we couldn't forget about the need here in our own Louisville community. We continue working with Louisville's Metro Animal Services (MAS) in innovative ways. In 2024 we transferred more than 500 animals from MAS to KHS for adoption and hosted multiple pop-up spay/neuter surgery days for their shelter dogs. In 2025, we plan to expand our partnership with MAS. With the support of Louisville Metro Government, MAS and KHS are offering low-cost spay/neuter vouchers, along with rabies and vaccination services, to residents of Jefferson County. These vouchers will help address the city's growing overpopulation crisis and hopefully bring down the number of animals entering shelters.

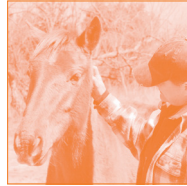
Our Pet Retention Services (PRS) team served over 6,000 pet guardians this year. By providing free advice, financial aid, pet food, and access to veterinary care to pet owners facing challenges, we kept more animals in their homes and out of shelters. Over 950 discounted veterinary care vouchers were redeemed in 2024, ensuring KHS was there for pets and people when they needed us the most.

We also expanded our outreach beyond dogs and cats, strengthening our equine programs. These efforts ensure that KHS is a champion not just for cats and dogs, but for horses as well, furthering our vision of being a comprehensive resource for all companion animals. At Willow Hope Farm, we hosted a variety of events like Trot or Treat, Horses 101 and Women Warriors. These programs have been pivotal in bringing people together, offering valuable life lessons, and providing emotional healing through interaction with horses.

Additionally, when natural disasters impacted shelters in Kentucky, Georgia and Florida, organizations like the ASPCA and BISSELL Pet Foundation reached out to us, knowing we could help. We were grateful to provide emergency shelter and care for animals in need.

KHS's proactive community programs have significantly impacted the lives of both animals and people across the state. We look forward to continuing this important work and expanding our reach to all 120 counties by 2028.





## Franklin County 13 Rescue

In December 2024, KHS's Equine C.A.R.E. team received a call that led to the rescue of 13 horses, who we call the Franklin County 13. These Thoroughbred and Paso Fino horses were found neglected and malnourished in Franklin County, Kentucky, living in deplorable conditions with limited access to food and water. With the help of local law enforcement, our team immediately sprang into action, traveling to the site to assess the situation and relocate the horses to safety at Willow Hope Farm.

Upon arrival, we faced a daunting scene—recent rainfall had made parts of the property nearly impassable, and three horses had jumped a fence to an area that was difficult to access. We corralled the remaining 10 horses, ensuring that each one was settled into their new stalls for observation. Over the next few days, the team was able to collect the three others and safely bring them to Willow Hope Farm.

As we were going through the vetting process, we discovered many horses were microchipped, and their histories were both shocking and heartbreaking. Among them was War Envoy, a Thoroughbred who had once been a world-class racehorse, traveling across oceans and winning hundreds of thousands of dollars in prize money. Yet here he was, found starving and abandoned in a muddy pit. War Envoy's story was just one of many among the Franklin County 13—and he brought international attention to horses who, once highly esteemed, had fallen through the cracks when their racing careers ended.

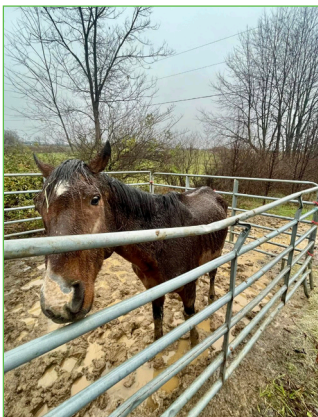
At Willow Hope Farm, we carefully monitored their diets, taking extra precautions to prevent refeeding syndrome, which occurs when malnourished horses are fed too much, too quickly. This process is crucial to ensure the horses' bodies can handle the nutrition they so desperately need. Despite their severe conditions, many of the Franklin County 13 showed remarkable resilience.

In the days following their arrival, we also faced challenges as one of the horses, Victor, showed signs of colic on Christmas Day. Our Equine C.A.R.E. team, along with an equine veterinarian, worked quickly to stabilize him and ensure his survival. Victor was transferred to an equine hospital where he received constant care for severe emaciation, pneumonia, and cellulitis. Though his condition was critical, Victor began showing signs of improvement in January, slowly regaining strength and confidence.

The road to recovery for the Franklin County 13 is far from over. Rehabilitation for such severely neglected horses can take months, with some needing up to six months of intensive care before they are fully restored to health. We are happy to announce they are all past the risk of refeeding syndrome and are enjoying unlimited access to hay!

Through community support, KHS has given each of the Franklin County 13 the care, attention and second chances they deserved. Thank you!

War Envoy Before



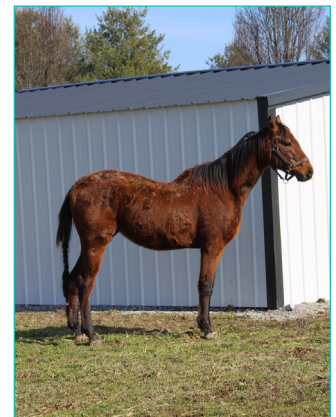
War Envoy After



Victor Before



Victor After





*KHS Board of Directors and Leadership Team Strategic Planning Retreat*

## Community Engagement



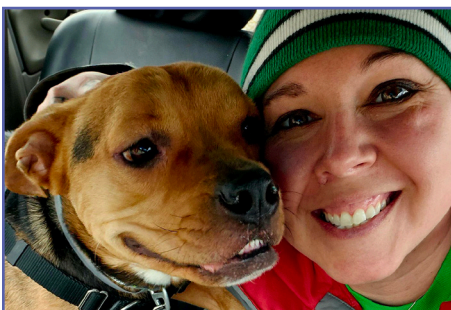
### Date with a Dog

Our volunteers and foster programs play an essential role in helping more animals find loving homes. One of our most popular initiatives is Date with a Dog, where volunteers take shelter dogs out for “dates” at animal-friendly businesses, walks in the park, or simply home for some couch time. The goal is to reduce shelter stress and provide dogs with a break, all while gathering valuable insights into their behavior outside the shelter. In 2024, we had 449 amazing dog dates thanks to many volunteers and partner companies!



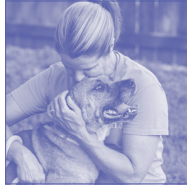
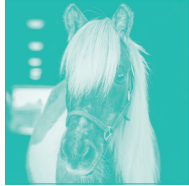
### Enrichment Fairs

In February 2024, we also began offering Enrichment Fairs as a volunteer opportunity. This fun Saturday activity invites volunteers to come to our shelter to create enrichment items for our shelter animals. From stuffed Kongs to ice cream cone treats, these monthly events have generated over 1,000 items that help keep our animals mentally stimulated and engaged while they wait for their forever homes.



### Foster First

KHS offers a Foster First program, which gives adopters a 14-day trial period to make sure their home is a good fit for the animal they’d like to adopt. This year, 67 animals found their forever families through the Foster First program, ensuring that both pets and guardians are fully ready for the commitment of adoption!



## Pet Retention Efforts

KHS's proactive programs work to reduce the number of pets surrendered to Louisville's shelters.



### Pet Retention Services

Our Pet Retention Services (PRS) team served more than 6,000 pet guardians in 2024, helping families keep their pets happy, healthy and out of shelters. Struggling pet guardians reached out for free advice, financial aid, pet food and supplies and more to overcome difficulties caring for their pets. This year, 953 discounted veterinary care vouchers provided by PRS were redeemed.



### Training for Dogs

Our certified training experts use positive reinforcement to help dogs learn basic obedience or overcome problem behaviors. Their work makes shelter animals more adoptable, while public classes support pet guardians and new adopters. In 2024, our team focused on getting more shelter dogs into playgroups so we knew what type of home they would do best in. Thanks to their efforts, 514 dogs participated in playgroups during their time at KHS.



### S.N.I.P. Clinic

Our S.N.I.P. Clinic provides high-quality, low-cost spay/neuter surgeries to reduce the number of animals in shelters and remove financial barriers that may prevent caring pet owners from spaying or neutering their pet. In 2024, the S.N.I.P. Clinic performed 8,882 surgeries, 16% of which were free or discounted.



### Waystation at Fern Creek Pet Resort

Our Fern Creek Pet Resort serves as a waystation for the ASPCA, providing overnight care for animals being transported to the Midwest from overcrowded Southern U.S. shelters. In 2024, 1,139 animals, including 1,024 dogs and 115 cats, spent the night with us on their way to finding new homes. Since beginning this partnership eight years ago, KHS has provided more than 21,000 animals with a place to stay overnight!

## Adoptions

KHS is Kentucky's largest animal adoption agency, finding loving homes for 5,499 animals in 2024. This includes 5,462 cats, dogs and horses who were adopted at our Sam Swope Pet TLC, East Campus, Willow Hope Farm and our adoption partner Purrfect Day Café. Another 37 animals found homes through transfer partners.



### Volunteers and Fosters

Volunteers and foster caregivers provide vital love and care. In 2024, 583 people opened their homes 3,120 times for animal fostering, helping us save more lives. Another 889 people volunteered 10,006 hours – providing direct animal care, assisting at events or offering vital office support.



### Equine C.A.R.E.

Our Equine C.A.R.E. (connect, assist, rescue, educate) program focuses on horses in transition. We move them from crisis to safety, provide re-homing services, match horses with adopters, and make resources available to our equine community. In 2024, KHS cared for 110 horses in need.

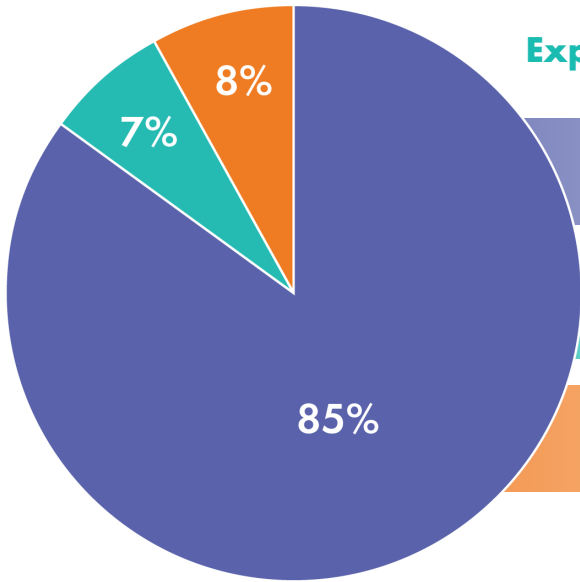


### Purrfect Day Café

Our partner Purrfect Day Café is the most successful cat café in the U.S. Celebrating six years, they have found homes for over 10,000 cats and kittens from KHS since opening in 2018. The partnership has increased cat adoptions in our local community and freed space for KHS to save the lives of more cats from other Kentucky shelters.

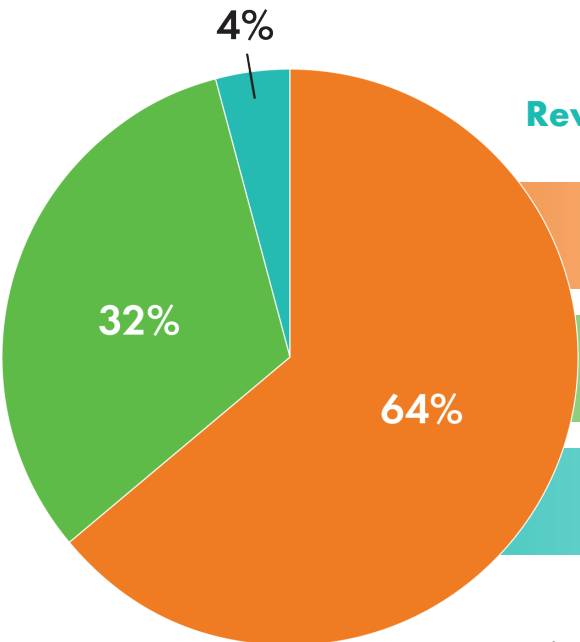


## Funding



### Expenses

- Pets and People Programs and Services  
\$8,179,405
- Fundraising Costs  
\$692,978
- Administrative Costs  
\$797,596



### Revenue

- Donations and Special Events  
\$7,962,534
- Pet and People Programs and Services  
\$3,948,327
- Investment Income  
\$473,601

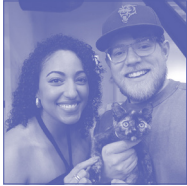


Numbers in this section reflect the Kentucky Humane Society's audited fiscal year of October 1, 2023 – September 30, 2024. The total ending net asset value as of September 30, 2024 was \$8,069,692.

## Winning Fundraising Events

Collectively, our events raised nearly \$1,000,000 in 2024! Our 31st annual Taxes & Tails Gala – A Happily Ever After Fairy Tail raised a record \$540,000. Our 30th annual Waggin' Tail on the Waterfront Festival brought in over \$100,000, while Pars for Pets Golf Scramble raised over \$46,000 to help dogs, cats and horses in need. Additionally, our local and regional events brought in nearly \$300,000 to support our lifesaving work!





## 2024 By the Numbers

**5,499** dogs, cat and horses found loving homes through KHS!

**5,634** animals were taken in, including **2,161** from pet guardians who could no longer care for them.

**6,347** pet guardians were counseled, and provided resources, by our Pet Retention Services team to help families keep their pets at home and out of shelters.

**8,882** spay/neuter surgeries were provided to cats and dogs at our S.N.I.P. Clinic, including **1,427** free and discounted surgeries.

**6,693** animals were provided affordable pet wellness and spay/neuter surgeries on our CARE-a-van mobile veterinary clinic.

**110** horses were cared for through our Equine C.A.R.E. Program.

**300+** adopted animals with special adoption needs were counseled by our behavior team.

**1,513** KHS cats found homes through our partnership with Purrfect Day Café.



### Sam Swope Pet TLC Center

241 Steedly Drive  
Louisville, KY 40214  
502-366-3355

### Purrfect Day Café

1741 Bardstown Road  
Louisville, KY 40205  
502-916-5051

### S.N.I.P. Clinic

4918 Preston Highway  
Louisville, KY 40213  
502-636-3491

### East Campus

1000 Lyndon Lane, Suite B  
Louisville, KY 40222  
502-272-1070

### Fern Creek Pet Resort

5225 Bardstown Rd  
Louisville, KY 40291  
502-499-1910

### Willow Hope Farm

4416 Todds Point Road  
Simpsonville, KY 40067  
502-272-1068