

ALL IN

Our Animals. Our Community. Our Future.



OUR MISSION



Pet portraits and campaign photography by Jennifer Schoenegge

The Kentucky Humane Society (KHS) is a champion for companion animals and the people who love them. Through leadership, education and proactive solutions, we are creating more compassionate communities.

About KHS:

As the largest and oldest animal welfare agency in Kentucky, our goal is to reduce pet homelessness through adoption, spay/neuter surgeries and proactive programs that help keep animals in their homes and out of shelters. KHS provides free counseling and support to local pet owners, including behavior advice, veterinary care referrals and more. Through our Love 120 program, KHS is working to positively impact all 120 counties in Kentucky. We work with rural shelters across the state to reduce overcrowding and increase their lifesaving capacity.

Imagine a community where no cat or dog suffers, and every animal has access to veterinary care and families who love them.

Imagine a modern space where injured, abused and homeless animals receive top-notch medical care and support.

Imagine a welcoming adoption center where excited families meet their new furry family members in a happy, stress-free environment.

Imagine a campus where everyone is welcome and receives the support they need to have healthy, lifelong relationships with their animals.

IF YOU CAN IMAGINE SUCH A WORLD, WE INVITE YOU TO JOIN THE KENTUCKY HUMANE SOCIETY'S ALL IN CAMPAIGN.



“ Our vision is to build a welcoming Animal & Community Campus to serve thousands of animals and people, while creating a more humane Louisville. With donations from dedicated supporters, the Kentucky Humane Society will help to end pet overpopulation, save our community’s most vulnerable animals, provide resources to help keep families and pets together, and set the standard for animal sheltering across the United States.”

Alisa Gray

- Alisa Gray
President & CEO



OUR VISION

At this new campus, KHS will welcome:



Homeless animals who need shelter housing designed for their physical and psychological comfort.



Children and adults eager to volunteer and participate in educational programs.



People who are excited to meet and adopt their next four-legged family members.



Talented, collaborative and diverse staff devoted to serving animals and people.



Pet owners who need affordable veterinary care for their cats and dogs.



DVM and vet assistant students wanting to intern in shelter medicine, encouraging more to enter these fields.



Struggling families who need resources to keep their animals healthy, happy and at home.



Shelter leaders across Kentucky and beyond ready to learn best practices in animal care and meeting their communities' needs.

OUR NEED

A PIVOTAL MOMENT FOR COMPANION ANIMALS



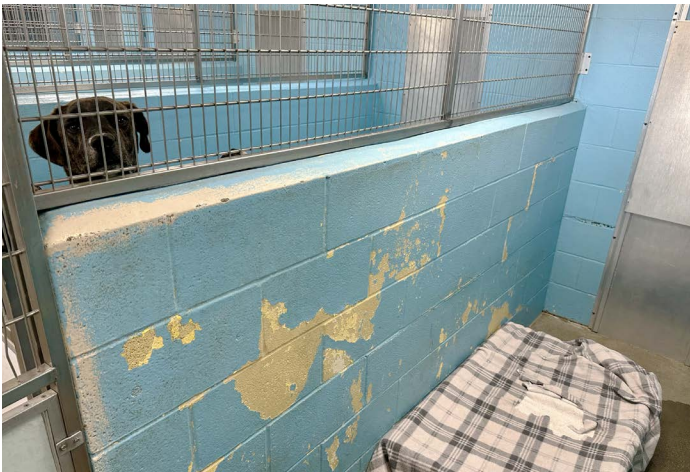
Kentucky's dogs and cats – and the families who love them – are in crisis.

- Lack of spay/neuter surgeries since the pandemic means too many unwanted pets are being born.
- Because of inflation and lack of pet-inclusive housing, many families can't provide for their pets, resulting in increased family debt and stress, more animal suffering, and overcrowded municipal shelters at a crisis point.
- Kentucky is in the top 10 worst states in the U.S. for access to veterinary care.

Kentucky's flagship animal shelter has fallen behind.

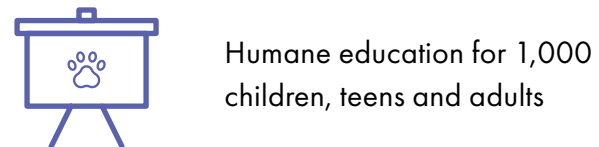
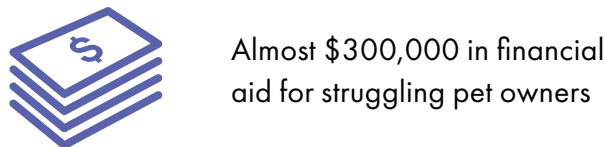
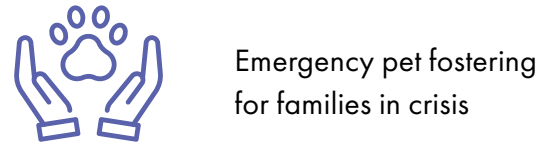
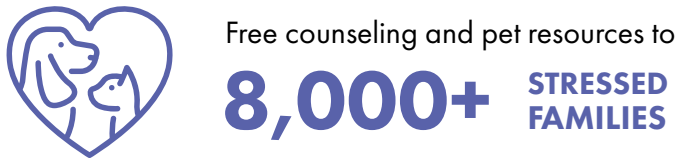
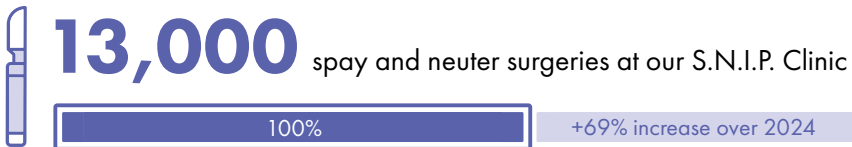
- Built in the 1950s, the Kentucky Humane Society's main shelter is crowded, outdated and not designed for animal or people comfort or safety.
- Our shelter veterinary team – who provides 45+ surgeries a day – operates out of a suite the size of a small bedroom.
- Services are spread across multiple locations, leading to inefficiencies and public confusion.
- KHS is unable to provide humane education or community events at its shelter due to lack of space.

KHS is not limited by its vision or determination, only by its existing facilities.



OUR IMPACT

By fulfilling our vision, we will achieve a sustainable, long-term system of care for the most vulnerable animals, while combating animal overpopulation and keeping pets in homes.





Resulting in:

- Decreased animal suffering
- Reduced pet overpopulation
- More humane housing for shelter pets
- More resources and less stress for pet owners
- Fewer animals dying in municipal shelters
- A more compassionate community and state
- 100/120 counties in Kentucky positively impacted by KHS

“Through collaboration with Metro Animal Services and shelter agencies throughout the state, the leadership of the Kentucky Humane Society provides meaningful progress for animal welfare, paving the way for a better future. The new Animal & Community Campus will ensure that KHS remains at the forefront of saving lives and strengthening our communities.”

- Patricia Swope
Honorary Chair, Capital Campaign Committee

INTRODUCING

OUR FUTURE ANIMAL & COMMUNITY CAMPUS





Kentucky
Humane Society

Medical Center

ALL IN:

FOR GIVING KENTUCKY'S ANIMALS A COMFORTABLE HOME

KHS will be able to house more homeless dogs and cats, plus have a flexible space to house animals brought in from large-scale cruelty/neglect cases or natural disasters.



Cats will benefit from having an area built specifically for them, with colony rooms, "cattios" with indoor/fenced outdoor areas, private condos, adopter "meet and greet" rooms, as well as food storage/preparation and janitorial areas.



Dogs will have their needs met with specially designed indoor/outdoor runs, low stimulation runs for dogs needing a quieter space, indoor runs for small dogs and puppies, outside play yards with enrichment including walking paths and adopter "meet and greet" rooms.



With a Loading Area and Transfer Garage, KHS will have a designated space for and secure unloading of pets coming to KHS on transports from other shelters, along with a loading dock, supply storage, animal intake exam room and maintenance shop.



The Adoption Center will include a welcoming public lobby, retail space, customer service areas and staff offices.



There will be a public lobby, animal intake exam room, counseling rooms, offices and storage for all shelter animal arrivals.



The Behavior Area will include a training room, quiet/real life rooms for under-socialized animals to get used to living in a home and outdoor training yards.

ALL IN:

FOR PROVIDING ANIMALS WITH COMPASSIONATE VETERINARY CARE

The Veterinary Services Wing will be the home for our **Shelter Veterinary Services, S.N.I.P. Clinic** and a **new full-service veterinary clinic** to provide affordable and comprehensive care to owned cats and dogs. By having these services in one wing, we can reduce redundancies, increase efficiencies, and ensure that shelter and owned animals receive incredible veterinary care. We will also have more space to welcome veterinary students for internships in shelter medicine and continued education opportunities.

**Our award-winning veterinary team ensures every animal receives gold standard medical care.
This space will include:**

- Dog ICU
- Cat ICU
- Surgery & Recovery Rooms
- Medical Quarantine Area
- S.N.I.P. Clinic for public spay/neuter clients
- Comprehensive low-cost public veterinary clinic
- Animal food and medical prep areas
- Laundry/Janitorial space
- Laboratory and pharmacy
- Secure medical storage
- Radiology
- Dental procedure area
- Medical gas and surgery pack prep
- Animal grooming and bathing room
- Workstations for employees and veterinary students

Kentucky Humane Society™

S.N.I.P. Clinic



ALL IN:

FOR SERVING KENTUCKY'S ANIMALS AND THE PEOPLE WHO LOVE THEM

Our comprehensive campus will unite under one roof the majority of KHS staff and volunteers and services for the public.

Foster area will include spaces for animals coming back from foster care, foster animal treatment, counseling, staff offices and workstations.

Pet Retention Services will have counseling rooms to have private conversations with struggling families to offer alternatives to shelter surrender.

Volunteers will have a dedicated space to check in and quickly find the areas they will support during their shifts.

Humane Education Classes and programs will empower children, teens and adults to value the compassionate treatment of animals.

Public Behavior Classes will teach pet owners and adopters how to use positive training methods to strengthen the bond with their animals.

Staff Support areas will include a multipurpose education room, board and meeting rooms, administrative offices and workstations, bathrooms, showers and lockers, a quiet room, break room with kitchenette and an outside patio.





JOIN US

Help us create a brighter future for Kentucky's animals and the families who love them – all while creating a more humane city and state.

With your support, the Kentucky Humane Society will build an Animal & Community Campus where everyone is welcome. Where every animal will receive the resources, time and care they need to thrive. And where everyone in our community can meet adoptable animals, access affordable veterinary care and community resources, and help create a more compassionate and humane world, right here in Kentucky.

“

As Board Chair of KHS and Director of Equip Exposition, I believe in supporting initiatives that strengthen our state and its people. The Kentucky Humane Society's new Animal & Community Care Campus is more than a shelter—it's a visionary investment in animal welfare, education, and community well-being. Equip Exposition is proud to stand alongside KHS in creating a space where pets and people can thrive together. This project will leave a lasting impact on Kentucky, and I encourage others to join us in supporting this transformational endeavor.”

- Karen Williams
*Chair Elect for Kentucky Humane Society
Board of Directors and Director of Equip
Exposition*

“

At the TurfMutt Foundation, we believe in the power of green spaces to transform lives—both human and animal. That's why we're proud to support the outdoor spaces at the new Animal & Community Care Campus, ensuring pets and people have a place to connect, heal, and thrive. Our partnership with KHS has helped find loving homes for dozens of dogs and raised critical funds for their lifechanging mission. We're excited to continue this work and be part of an even brighter future for animals in Kentucky.”

- Kris Kiser
*President of Equip Exposition and the
TurfMutt Foundation*

FISCALLY RESPONSIBLE AND READY

The Kentucky Humane Society is Kentucky's most effective and respected companion animal organization. Thanks to the generosity of over 25,000 annual donors and self-generating revenues, KHS maintains a general operating budget of \$9 million.

KHS is ideally situated to meet the day-to-day operating requirements to achieve our mission. Income streams are reliable, and KHS almost always has an annual surplus in the budget. The surplus fuels reserves to enable KHS to navigate risk, ensure the continuation of services in the face of disasters, and have sufficient working capital. Our 13-member board partners with the President & CEO to accomplish the organization's key objectives, which are guided by a defined strategic plan that is updated annually.

KHS has no debt or mortgages. We have \$7 million in funds set aside for ALL IN and anticipate another \$5 million for the campaign from property sales. This is in addition to over \$7 million in emergency reserves. Our total liabilities and net assets are \$24 million.

The KHS 13-member board and 11-member leadership team fully support KHS entering a capital campaign. We have strategically built our philanthropic reach over the last several years in anticipation of entering a campaign, growing philanthropy from \$1.6 million in 2019 to \$8 million in 2024.

Capital Campaign Committee Members

Brian Ammon, Landon Brantley, Tara Bristow, Amber Halloran, Ellen Stubbs, Patti Swope, Shea Van Hoy and Karen Williams

We are well-positioned to enter the All In campaign, but *we need YOU* to reach our fundraising goal.



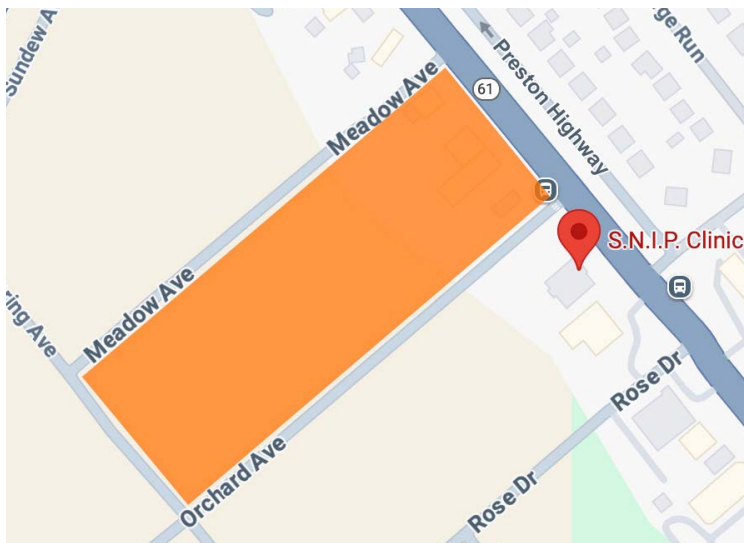
ALL IN:

OUR CAMPAIGN AT A GLANCE

The total indoor floor plan is approximately 54,000 square feet. There will also be an additional 9,600 square feet in outdoor covered space. Our location is very accessible and centrally located at the intersection of Preston Highway and Orchard Avenue.

Total Project Cost: \$37 million

- KHS will contribute: \$12 million
- Gauntt Foundation, FL: \$2 million
- Patti Swope & Sam Swope Family Foundation, KY: \$1.5 million
- Art for Animals Foundation, NY: \$1 million
- Louisville Metro Government, KY: \$1 million
- ASPCA: \$750,000



THANK YOU

ARE YOU ALL IN?

To discuss how your lead gift to the ALL IN campaign can build hope for our animals, community and future, and how you can benefit from naming opportunities, please contact:

Alisa Gray, President & CEO | 502-515-3131 | agray@kyhumane.org





Kentucky
Humane Society™
Lifelong Friends

Are you
ALL IN?

kyhumane.org/allin



The Kentucky Humane Society is an independent, private nonprofit 501(c)(3) organization. EIN: 61-0463938.

Learn more about KHS at kyhumane.org or follow us @kyhumane and Kentucky Humane Society.



Alisa Gray, President & CEO
502-515-3131 | agray@kyhumane.org