

PAW STREET JOURNAL

Winter 2026 at Kentucky Humane Society



Kentucky Humane Society
Lifelong Friends



Alisa Gray
President & CEO

Letter from Alisa

As we look toward the future, I'm filled with excitement for what's ahead at the Kentucky Humane Society (KHS). Our community has always been at the heart of everything we do, and now, with our 'All In' Campaign, we have a bold opportunity to reimagine the way we care for animals and support the people who love them.

We invite you to join us in our vision to help even more animals and further support members of our community. Our new Animal & Community Campus will be a transformative space that expands our life-saving programs and serves the community in ways we've only previously dreamed of!

With 54,000 square feet of indoor space and nearly 8,000 square feet of covered outdoor space, this campus will increase access to veterinary care, spay and neuter services, adoptions, counseling, education and emergency foster support.

Thanks to the generosity of our supporters, we are already 60% of the way to our fundraising goal. Now, we need your help to bring this vision fully to life. Your participation in giving or spreading the word ensures that thousands more animals will have the chance to live healthy, happy lives.

Together, we can be All In—today and for years to come. Thank you for standing with us as we build a brighter, more compassionate future!

Alisa Gray

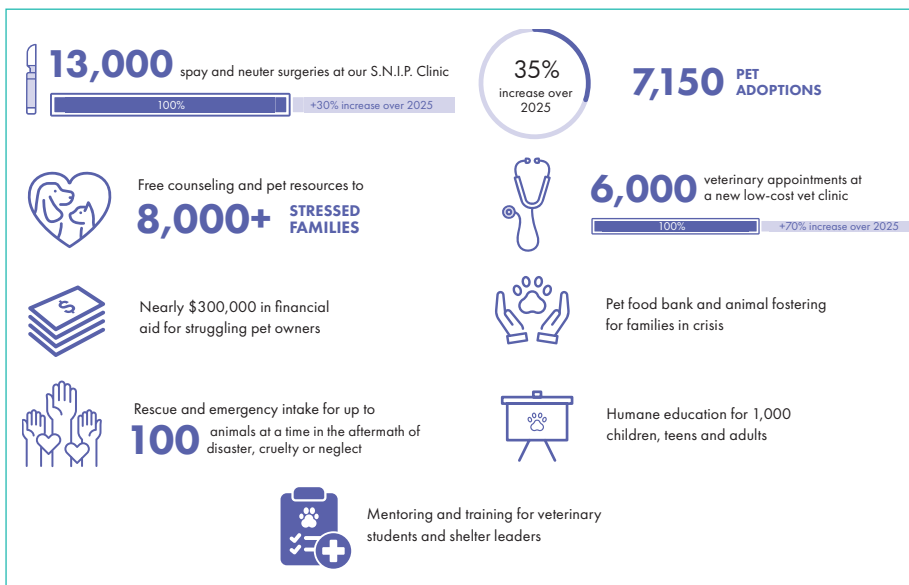
P.S. We hope you'll consider a gift to both our annual AND capital campaign initiatives. By supporting both efforts, you'll ensure animals are cared for today and for years to come.

Kentucky's Animal & Community Campus

Imagine a community where no cat or dog suffers, and every animal has access to veterinary care and families who love them; a modern space where injured, abused and homeless animals receive top-notch medical care and support; a welcoming adoption center where excited families meet their new furry family members in a happy, stress-free environment; and a campus where everyone is welcome and receives the support they need to have healthy, lifelong relationships with their animals.

If you can imagine such a world, we invite you to join the Kentucky Humane Society's All In Campaign to build a new Animal & Community Campus centrally located off Preston Highway near the I-65/I-264 exchange.

In this new building, KHS will expand dog/cat services, and annually provide:

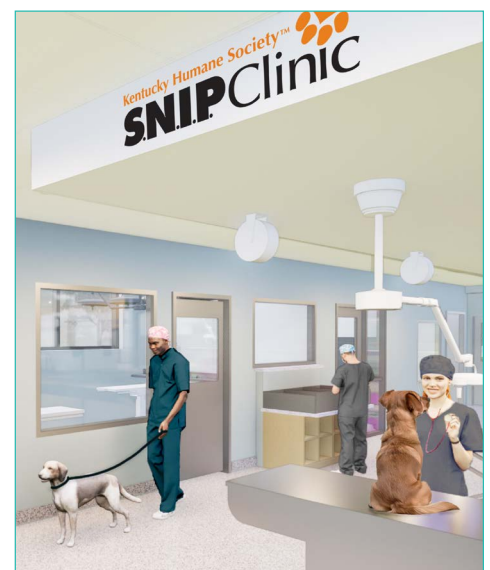


"As Board Chair of KHS, I believe in supporting initiatives that strengthen our state and its people. The Kentucky Humane Society's new Animal & Community Campus is more than a shelter—it's a visionary investment in animal welfare, education, and community well-being. This project will leave a lasting impact on Kentucky, and I encourage others to join us in supporting this transformational endeavor." — Karen Williams

To discuss how your gift can build hope for our animals, community and future, and how you can benefit from naming opportunities, please email allin@kyhumane.org.

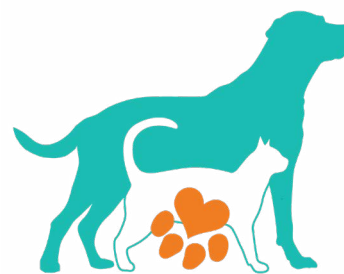


Scan the QR code or visit kyhumane.org/allin to learn more and to donate.



All In Today; All In Tomorrow

As we embark on this exciting new capital campaign, the Kentucky Humane Society is deeply grateful for the extraordinary generosity of our supporters. While capital gifts will help us build a stronger future, continued support of our annual fund remains essential. These donations provide the day-to-day resources that keep our mission moving: they feed our shelter animals, support adoptions, fuel outreach programs, and allow us to respond whenever animals need us most. We hope you will consider supporting both appeals so we can ensure that KHS is All In for animals both today and into the future.



ALL IN

Kentucky Humane Society

Why The Shaw Family is All In for Kentucky's Animals



The Shaw family has long believed animal welfare is essential to a strong community, making their support of the Kentucky Humane Society a natural fit. After years of volunteering and giving, they knew they wanted to deepen their impact when they learned about the All In Campaign's bold vision to transform animal welfare across Kentucky.

Their commitment is deeply personal. Pets have always been part of their family, especially Penny, a dachshund mix adopted from KHS in 2012. Penny became the heart of their involvement and even inspired the name of their donor advised fund. Her life and the care she received reinforced their belief that every animal deserves a chance to thrive.

They see the All In Campaign as a once-in-a-generation opportunity to equip KHS with the tools needed to serve pets and people statewide, particularly in under-resourced communities.

Now a true "family affair," their support has grown to include parents and siblings, creating a shared legacy rooted in compassion. Their message to others is simple: if you love animals, this is a powerful way to make a lasting difference.



Congratulations, Karen Koenig!

After more than 20 years of devoted service, Karen Koenig, our Vice President of Animal Welfare, is retiring. Karen's leadership, compassion and creativity have shaped KHS in countless ways. From growing our S.N.I.P. Clinic, which has provided over 175,000 spay/neuter surgeries to the public, to guiding our shelter team through changes and growth, Karen has left her mark on thousands of animals and people. She's assisted rural shelters in crisis with hands-on support and inspired animal lovers across town with her heartfelt Tuxes & Tails speeches. Join us in congratulating her and wishing her a happy retirement!



Happy Tails

Congrats to all Adoptees!



Da Big Cheese was adopted and has a new friend to hang out with! Happy Tails, Da Big Cheese!



This sweet family took Lance home during the Bissell Empty The Shelters event! Yay, Lance!



Papi was adopted at our Willow Hope Farm and has a new home to settle into.

Join us for one of our upcoming events!

Lunch & Learn: A Vision for Our Future – January 14, February 11 or March 11 at 11:00 a.m.

Prova Spirits Tasting – February 26 at 5:00 p.m.

Private Tour of Our Facilities – Available at your convenience

Learn more or register at tinyurl.com/allin-events.

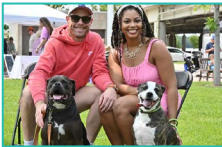
Save the Date:

Learn more or become a sponsor at kyhumane.org/events



Hammer's Lou Adopts!
Saturday, May 9, 2026
Kentucky Exposition Center

Join us for the fourth annual mega adoption event to find loving homes for adoptable dogs and puppies.



Waggin' Tail Festival
Sunday, June 7, 2026
Waterfront Park's Festival Plaza

Waggin' Tail Festival is a dog-friendly festival that brings neighbors, families and their beloved dogs together for a day of pure canine delight.



Tuxes and Tails Gala
Saturday, August 8, 2026
Louisville Marriott Downtown

Tuxes & Tails Gala is our signature fundraising gala and auction. The event features appetizers, an open bar, silent and live auctions, dinner, music, fun games and of course, adorable adoptable animals.



Pars for Pets
Monday, October 12, 2026
University of Louisville Golf Club

Pars for Pets is our annual charity golf scramble. Foursomes enjoy a day of golf, games and giving.



Thank You!

Our lifesaving work is only possible because of compassionate animal lovers like you. KHS is a private non-profit, and we count on donations from our loyal supporters. Thank you for caring!
Give now at kyhumane.org/donate.